



# Sygate Security Agent

Best-of-breed firewall solution for Windows® XP Embedded-based Wyse® Winterm™ devices

Wyse Technology, the leading supplier of thin-client solutions, is the choice of the world's largest businesses and institutions offering the most cost-effective, highly manageable, and secure way to deploy applications including rich GUI-based and media rich Windows® applications to end-users throughout any enterprise. Low client cost, low power consumption, obsolescence-free longevity, effortless device setup, and remote management combine to keep your overall application deployment and computing environment costs to a minimum without sacrificing capabilities.

Wyse® Winterm™ devices are inherently more secure than standard personal computers. However, the Windows® XP Embedded operating system has vulnerabilities that can be exploited by the ever increasing sophistication in the attacks on corporate networks. In response to this threat, Wyse Technology, in partnership with Sygate Technologies, provides a firewall solution to further enhance security within the thin-client infrastructure.

Sygate Technologies' Sygate Security Agent (SSA) is a best-of-breed third-party solution for defending Microsoft® Windows® XP Embedded-based Wyse® Winterm™ devices against worms, Trojan horses, and other malicious code. SSA provides a multilayered security approach that includes an application-centric firewall, application control, intrusion prevention, and policy enforcement which protects devices from being compromised by either inbound or outbound traffic.

SSA locks down the network communication of the embedded device to only the required applications and network traffic, ensuring that no malicious application can send data to or from the embedded device. All data entering or exiting the embedded device is analyzed against signatures of known attacks and behavioral patterns of unknown attacks, effectively protecting the embedded device. The solution provides customers a comprehensive security solution to ensure that their mission critical and life critical applications and networks are not compromised.

SSA can be easily and automatically deployed to Wyse thin clients using Wyse® Rapport™ device management software that simplifies IT management, reduces total cost of ownership, and improves return on investment. Customers can use the "no hassle" deployment features of Wyse Rapport to easily distribute security updates, including policies and signatures.

## Features

## Benefits

Application-centric firewall with rules based security policy

Protects Windows XP Embedded devices from Trojan horses, viruses, worms, and other malicious code

Intrusion prevention engine that applies application layer information and deep-packet inspection

Effectively identifies and blocks known and unknown attacks within the corporate network

Small footprint of only 4MB

Enables easy deployment on Wyse Winterm devices

Flexible policy editor

Customizable firewall policies that fit corporate needs and easily deploys to Wyse Winterm thin clients

Configurable user interface options

Allows administrators the flexibility to configure the agent UI based on user roles

Fast and easy deployment using Wyse Rapport software

Reduces time and effort needed to deploy firewall solution



**Winterm Thin Client Requirements**

- 128 MB of RAM
- 5 MB of disk space

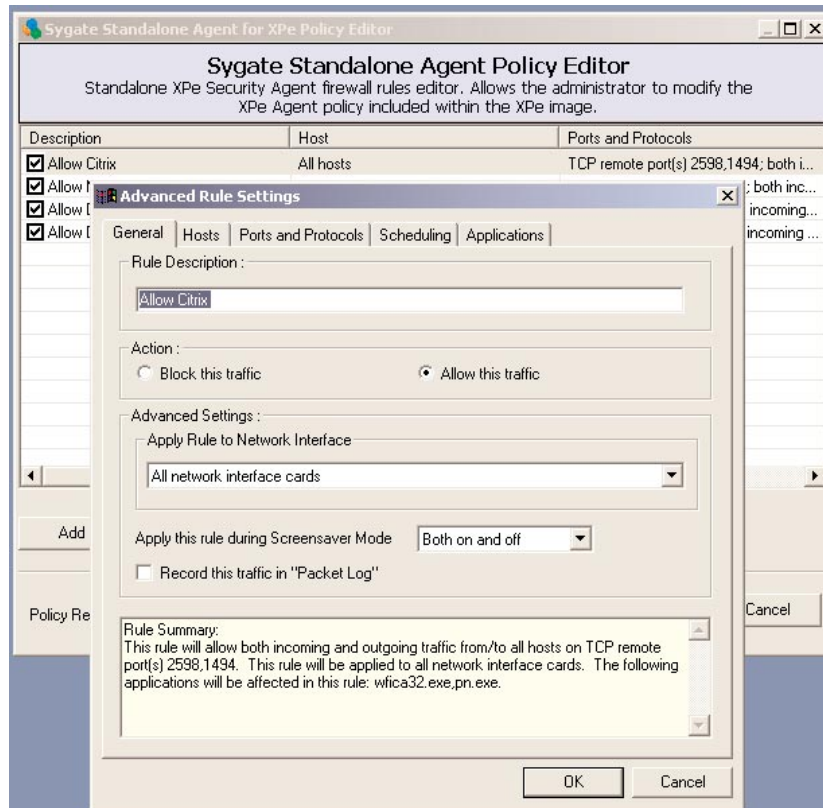
- One ethernet adapter

**OS Requirements**

- Windows XP Embedded

**Dependencies**

- Internet Explorer
- TCP/IP networking
- COM base
- IP security services
- NDIS & NDIS user-mode I/O driver
- OLE dialog interfaces



Create and deploy corporate security policies using SSA flexible policy editor



**Wyse Technology Inc.**  
3471 North First Street  
San Jose, CA 95134-1801

**International Sales:**  
Australia 61 (0) 2 9492 0180  
China 86 10 84973054/55  
France 33 1 39 44 00 44  
Germany 49 (0) 89 4600990  
India 91 80 51548888  
Singapore 65 6728 9973  
UK 44 (0) 118 923 2740  
United States 408 473 1200

**Wyse Sales:**  
800 GET WYSE  
(800 438 9973)

**Visit our websites at:**  
<http://www.wyse.com.au>  
<http://www.wyse.fr>  
<http://www.wyse.de>  
<http://www.wyse.in>  
<http://www.wyse.co.uk>  
<http://www.wyse.com>

**Or send email to:**  
[sales@wyse.com](mailto:sales@wyse.com)

**Wyse Customer Service Center:**  
800 800 WYSE  
(800 800 9973)

©2005 Wyse Technology Inc. All rights reserved. Wyse, WY, and WyseWorks are registered trademarks, and the Wyse logo, Winterm logo, Wyse, and Winterm are trademarks of Wyse Technology Inc. Rapport is a registered trademark of Rapport Technologies, Inc., a division of Wyse Technology Inc. Microsoft, Windows, and Windows NT are registered trademarks of Microsoft Corporation. Other product names mentioned herein are for identification purposes only and may be trademarks and/or registered trademarks of their respective companies. Specifications subject to change without notice. Some features require support by server operating system and protocol. A printed copy of the Wyse Technology End User License Agreement is included in the shipping box and provided for your reference only. The license at [www.wyse.com/license](http://www.wyse.com/license) as of the purchase date is the controlling licensing agreement. By copying, using, or installing the software or the product, you agree to be bound by those terms.  
07/05 880924-64 Rev. A